


DRINKING WATER SOURCE PROTECTION

ACT FOR CLEAN WATER

South Georgian Bay
Lake Simcoe
Source Protection
Region



SPP pre-consultation:
Municipal policy
comparison and feedback

Ben Longstaff, LSRCA
December 22, 2011

DRINKING WATER SOURCE PROTECTION

ACT FOR CLEAN WATER

South Georgian Bay
Lake Simcoe
Source Protection
Region

Pre-Consultation

- October 7: Kawartha Lakes
- October 25: Haliburton
- November 1: Simcoe
- November 3: Simcoe
- November 15: Durham
- November 23: York
- November 25: LS/BR SPA
- November 30: Peel
- December 6: Dufferin
- December 7: Grey
- December 16: NV SPA

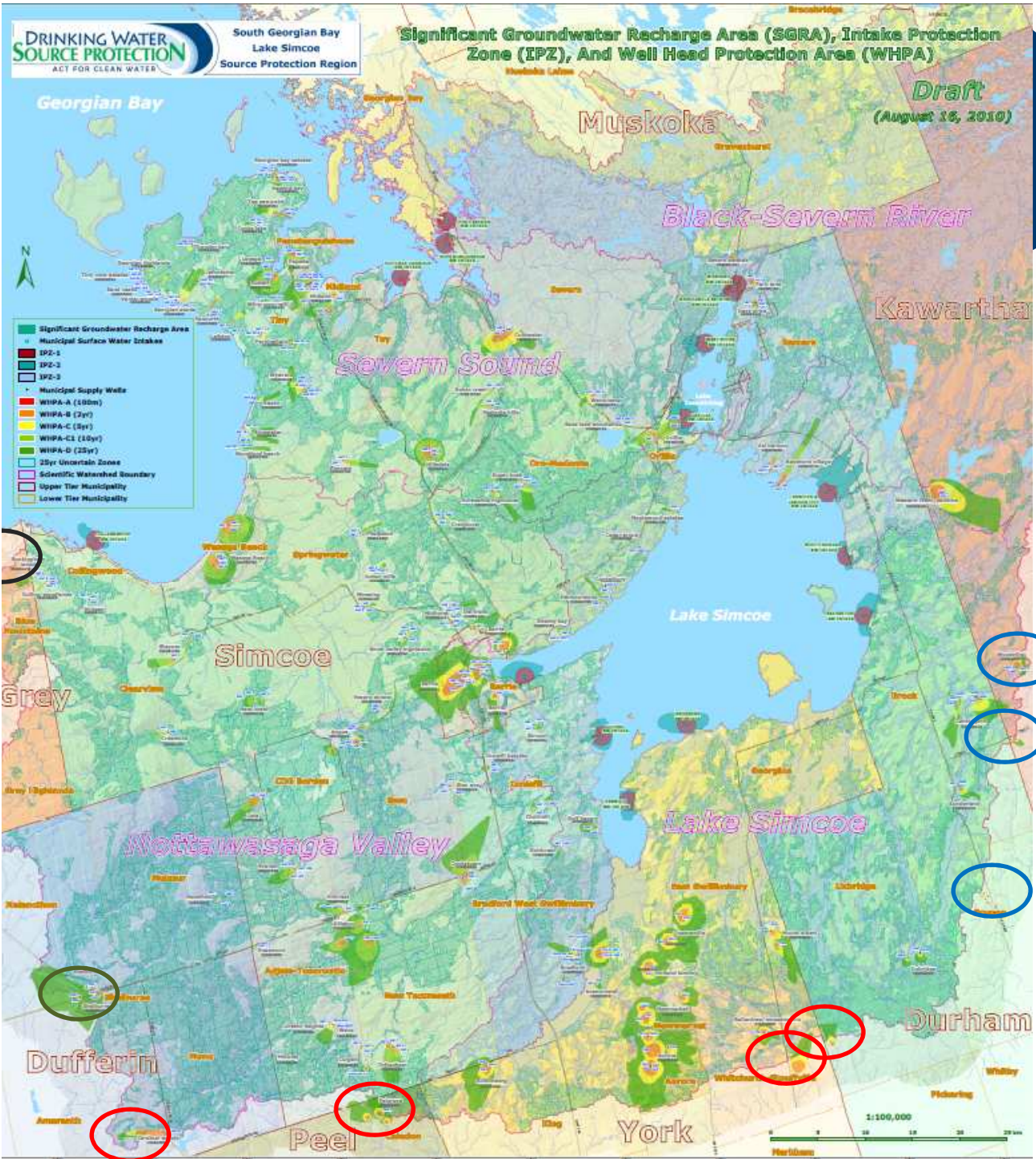
DRINKING WATER SOURCE PROTECTION

ACT FOR CLEAN WATER





Dufferin: Dec 6

South Georgian Bay
Lake Simcoe
Source Protection
Region





South Georgian Bay Lake Simcoe Source Protection Region

-  CTC
-  TCC
-  LE
-  SGSNB



DRINKING WATER SOURCE PROTECTION

ACT FOR CLEAN WATER

South Georgian Bay
Lake Simcoe
Source Protection
Region

Next steps

- **Jan 13th:** Pre-consultation officially closed
- **Jan 13th – 18th:** Consolidate pre-consultation feedback
- **Jan 19th – 20th:** SPP policy workshop
- **Jan 21 – Feb 16th:** Finalize draft SPP
- **Feb 16th:** SPP sent to SPC for review
- **Feb 23rd:** SPC approval of draft for first consultation
- **March 5 – May 4:** First formal consultation

DRINKING WATER SOURCE PROTECTION

ACT FOR CLEAN WATER

South Georgian Bay
Lake Simcoe
Source Protection
Region

Existing – municipal policies

	CTC	SGBLS
#2 Onsite sewage (septic)	<ul style="list-style-type: none"> • Mandatory inspection program • Education and outreach (care and maintenance awareness program) • Consider incentives for septic maintenance and/or upgrade 	<ul style="list-style-type: none"> • Mandatory inspection program • Education and outreach (care and maintenance awareness program) • Consider incentives for septic maintenance and/or upgrade
3. Application of Agricultural Source Material (ASM) to Land	Complete a RMP for existing and expanding farms not phased-in under the NMA. RMP to be based on NMP	<u>Prohibition within WHPA-A.</u> Complete a RMP for existing and expanding farms not phased-in under the NMA. RMP to be based on NMP everywhere else significant.
8. The Application of commercial fertilizer to land	Agricultural: Policies directed towards province Non-agricultural: RMP to be based on NMA	Complete a RMP for existing and expanding farms not phased-in under the NMA. RMP to be based on NMP

DRINKING WATER SOURCE PROTECTION

ACT FOR CLEAN WATER

Existing – municipal policies

South Georgian Bay
Lake Simcoe
Source Protection
Region

	CTC	SGBLS
9. The handling and storage of commercial fertilizer	Complete a RMP for existing and expanding farms not phased-in under the NMA. RMP to be based on NMP	Complete a RMP for existing and expanding farms not phased-in under the NMA. RMP to be based on NMP
10. The application of commercial pesticide to land	Risk Management Plan (RMP)	Risk Management Plan (RMP)
11. The handling and storage of pesticide	Risk Management Plan (RMP)	Risk Management Plan (RMP)
15. The handling and storage of fuel	RMP- for Farm and Multi-unit Residential Properties and ICI (>2500L) Education and outreach (single residential fuel oil)	<ul style="list-style-type: none"> • Risk Management Plan (RMP)
16. The handling and storage of DNAPLS	<ul style="list-style-type: none"> • > 5 litres containers - prohibit and phase out within 5 years • >1 to 5 litres - RMP • Education and outreach on proper disposal and alternative products • Consider incentive for those affected by prohibition 	<ul style="list-style-type: none"> • Risk Management Plan (RMP) for small users • Education and outreach on proper disposal and alternative products for small users • Provide incentives and phase out bulk storage • Identify sources and target educational materials

DRINKING WATER SOURCE PROTECTION

ACT FOR CLEAN WATER

South Georgian Bay
Lake Simcoe
Source Protection
Region

Future – municipal policies

Significant Threat Policies Implemented by Municipality		
	CTC	SGLBS
1. Waste	<p>Prohibit new facilities - LUP Expansions reviewed case by case - LUP Shared responsibility with others for E & O</p>	<p>Prohibit new landfills - LUP Shared responsibility with others for E & O</p>
2. Sewage system	<p>Prohibit - LUP -new lot creation dependent on septic system -new or expanded SWM infiltration ponds -new sewage storage -new holding tanks unless temporary or required for health reasons -new combined sewer services Expansions and new septic systems on existing lots of record -reviewed case by case -require tertiary treatment or equivalent Expansion or new sanitary sewers or sewage storage - LUP -prohibit unless EA determines only viable location Shared responsibility with others for E & O</p>	<p>Prohibit – LUP -new small and large septic systems -new WWTPs</p> <p>Require preparation of MESP's for new development</p> <p>Encourage: -sewer use by-laws -higher standards for sewage infrastructure -regular maintenance of sewer network</p> <p>Shared responsibility with others for E & O</p>

DRINKING WATER SOURCE PROTECTION

ACT FOR CLEAN WATER

South Georgian Bay
Lake Simcoe
Source Protection
Region

Future – municipal policies

Significant Threat Policies Implemented by Municipality		
Future Threat	CTC	SGBLS
3. Application of agricultural source material	Prohibit - S. 57 & RLU S. 59 For new where not covered by NMA	Prohibit - S. 57 & RLU S. 59 in WHPA-A Manage - S. 58 & RLU S. 59 elsewhere it's a SDWT For new where not covered by NMP Encourage municipality to avoid siting new water supplies where existing activities would become a SDWT
4. Storage of agricultural source material	Prohibit - S. 57 & RLU S. 59 For new where not covered by NMA	Prohibit - S. 57 & RLU S. 59 For new where not covered by NMS
5. Management of agricultural source material (Aquaculture)	No policy	
6. Application of non-agricultural source material to land	No municipal policy implementation	
7. Handling and storage of non-ASM	No municipal policy implementation	Prohibit - LUP

DRINKING WATER SOURCE PROTECTION

ACT FOR CLEAN WATER

Future – municipal policies

South Georgian Bay
Lake Simcoe
Source Protection
Region

Significant Threat Policies Implemented by Municipality

Future Threat	CTC	SGBLS
8. Application of commercial fertilizer to land	Manage - S. 58 & RLU S. 59 For new & expansions where not covered by NMA	Manage - S.58 and RLU S. 59
9. Handling and storage of commercial fertilizer	Prohibit - S. 57 & RLU S. 59 in WHPA-A Manage - S. 58 & RLU S. 59 outside WHPA-A For new & expansions where not covered by NMA	Prohibit - S. 57 & RLU S. 59 Prohibit - LUP
10. Application of pesticide to land	Manage - S. 58 & RLU S. 59 Encourage incentive program to establish buffers strips	Manage - S. 58 & RLU S. 59
11. Handling and storage of pesticide	Manage - S. 58 & RLU S. 59 Encourage incentive program to establish buffers strips	Prohibit - S. 57 & RLU S. 59; Prohibit - LUP Encourage providing additional conveniences for toxic waste disposal
12. Application of road salt	Only drafted for ICA, and moderate and low threats (Private – RMP, research, license/accreditation) (public roads: RMP, other, E & O)	Manage - S.58 & RLU S.59 Shared responsibility with others for E & O
13. Handling and storage of road salt	Same as application of road salt	Prohibit - S.57 and RLU S.59 Prohibit - LUP

DRINKING WATER SOURCE PROTECTION

ACT FOR CLEAN WATER

South Georgian Bay
Lake Simcoe
Source Protection
Region

Future – municipal policies

Significant Threat Policies Implemented by Municipality		
Future Threat	CTC	SGBLs
14. Storage of snow	No municipal policy implementation	Prohibit - S. 57 & RLU S. 59 Prohibit - LUP Share responsibility with others for E&O
15. Handling and storage of fuel	Prohibit - S. 57 & RLU S. 59 Prohibit - LUP Share responsibility with others for E & O	Prohibit - S. 57 & RLU S. 59 Prohibit - LUP
16. Handling and storage of a dense non-aqueous phase liquid	Manage for quantities >1 to 5 litres - S. 58 & RLU S. 59 Prohibit for quantities >5 litres - S. 57 & RLU S. 59 Shared responsibility with others for E & O	Prohibit - S. 57 & RLU S. 59 Prohibit - LUP Shared responsibility with others for E & O Encourage providing additional conveniences for hazardous waste disposal
17. Handling and storage of organic solvent	Prohibit - S. 57 & RLU S. 59 Shared responsibility with others for E & O	Prohibit - S. 57 & RLU S. 59 Prohibit - LUP Shared responsibility with others for E & O Encourage providing additional conveniences for hazardous waste disposal

DRINKING WATER SOURCE PROTECTION

ACT FOR CLEAN WATER

South Georgian Bay
Lake Simcoe
Source Protection
Region

Future – municipal policies

Significant Threat Policies Implemented by Municipality		
Future Threat	CTC	SGBLS
18. Management of aircraft de-icing runoff	Prohibit - LUP	Report annually on number of EAs for new facilities in vulnerable areas
21. Livestock grazing/pasturing, outdoor confinement area, or farm-animal yard	<p>Prohibit - S. 57 & RLU S. 59 in WHPA-A Manage - S.58 & RLU S. 59 in WHPA-B (Outdoor Confinement or Farm-animal Yard)</p> <p>Manage - S. 58 & RLU S. 59 (Livestock Grazing or Pasturing Land)</p>	<p>Prohibit - S. 57 & RLU S. 59 in WHPA-A Prohibit – LUP Manage – S.58 and RLU S. 59 elsewhere Shared responsibility with others for E & O</p>



DRINKING WATER
SOURCE PROTECTION

ACT FOR CLEAN WATER

**South Georgian Bay
Lake Simcoe
Source Protection
Region**

Feedback

Some of what we heard...

DRINKING WATER SOURCE PROTECTION

ACT FOR CLEAN WATER

South Georgian Bay
Lake Simcoe
Source Protection
Region

Process

- Will source protection staff be available to answer questions and speak to council?
- When will the plans be approved? What should I do in anticipation of the plans being approved?
- If a gas station application comes in today- can a municipality enforce SPP policies prior to the SPP being approved?

DRINKING WATER SOURCE PROTECTION

ACT FOR CLEAN WATER

South Georgian Bay
Lake Simcoe
Source Protection
Region

General SPP content

- Existing vs future
 - Can the plan have something upfront to state what an existing threat is and what is a future threat?
 - Need to provide municipalities with a clear definition of what we mean by “existing lots of record”.
 - Clarity needed as to when a farming activity is an existing or future activity. Change in farm type (crop to dairy? Expansion, new farm)
 - Make sure retrofitting is allowed within the current policies.

DRINKING WATER SOURCE PROTECTION

ACT FOR CLEAN WATER

South Georgian Bay
Lake Simcoe
Source Protection
Region

General SPP content

- Municipalities would like to have consistent policies across SWP Regions
- Municipalities like the multi-barrier approach to policy making (i.e. always having an accompanying LUP policy).
- Municipalities would like the policies to be very clear about the circumstances and situations where policies apply
- Can SPP make it clearer as to whether lower or upper tier municipality responsible for implementation of a policy
- Have the regions obtained a legal review of the policies, especially in relation to municipalities? If not, suggest review be undertaken.
- Bill 51 needs to be proclaimed before municipalities are able to include conditions into zoning bylaws
- Who has the authority to sign-off on SPP policies in the planning process stage?

DRINKING WATER SOURCE PROTECTION

ACT FOR CLEAN WATER

South Georgian Bay
Lake Simcoe
Source Protection
Region

Policies - DNAPLS

- Inconsistent between Regions:
 - CTC letting 1L slide through, RMP for up to 5 L ban any higher volume. SGBLS RMP for any volume.
 - SGSNBP letting 25L slide through RMP for everything else.
- Should our DNAPL policy say “with the exception of household use?”
- Can the SPC recommend that the province not sell DNAPLS and Organic Solvents without a licence?



DRINKING WATER
SOURCE PROTECTION

ACT FOR CLEAN WATER

**South Georgian Bay
Lake Simcoe
Source Protection
Region**

Policies – salt

- Some municipalities want stricter salt policies everywhere.
- Municipalities think salt/snow storage should be a pre-screening and a requirement for new developments.



DRINKING WATER SOURCE PROTECTION

ACT FOR CLEAN WATER

South Georgian Bay
Lake Simcoe
Source Protection
Region

Policies – Agriculture

- Should category 1 NASMs be exempt from Significant Threat prohibition?
- Pesticide act already provides clear regulation on how must be applied, and farmers applying pesticides must be licensed
- Ability for municipalities to implement agricultural policies is limited as very few situation where a permit is required.



DRINKING WATER
SOURCE PROTECTION

ACT FOR CLEAN WATER

South Georgian Bay
Lake Simcoe
Source Protection
Region

Policies – Monitoring / E & O

- Most municipalities would like the SPAs/CAs to handle all of the education and outreach policies.
- Dufferin Municipalities do not want to be responsible for Education and Outreach policies

DRINKING WATER SOURCE PROTECTION

ACT FOR CLEAN WATER

South Georgian Bay
Lake Simcoe
Source Protection
Region

SPP Implementation

- What consequence if we don't implement the policies?
- **RMO/RMI:**
 - Lots of general questions on RMO/RMI: What is an RMO? Do I need one? How do I hire one? What do they do? Can the RMO and RMI be the same person? Can I Share the RMO with my neighbour?
- **Implementation guide:**
 - Municipalities would like an implementation guide.
 - Including some guidelines on where to site future wells
- **Assessment Report:**
 - Can the assessment report be challenged?
 - Can something new be added to the AR and subsequently have the policies apply

DRINKING WATER SOURCE PROTECTION

ACT FOR CLEAN WATER

South Georgian Bay
Lake Simcoe
Source Protection
Region

SPP Implementation

- **Monitoring and Reporting:**
 - Municipalities in favour of SGBLS general monitoring policies compared to CTC detailed and task oriented monitoring policies.
 - What are the reporting requirements to the SPA/Region (York) each year? Will they be different? Municipalities want it to be the same.
 - SGSNBP is thinking of making a template for municipalities to fill in to report on monitoring policies.
 - Municipalities anticipate working on fulfilling the monitoring requirements over the course of the year and a final step on planning files (i.e. not a lot of time will be needed to do this).

DRINKING WATER SOURCE PROTECTION

ACT FOR CLEAN WATER

South Georgian Bay
Lake Simcoe
Source Protection
Region

Other

Insurance

- Have committee's considered insurance implications to homeowners and farmers?
- Has farmers mutual been asked if they are planning on denying insurance within Vulnerable areas?
- Should/will the committee's be undertaking an Education and Outreach with the insurance industry?

Transport corridors

Several municipalities are concerned that transportation corridors are not be captured in the current Source Protection Plan.