

# ***Source Protection Plans***

## ***Municipal Pre-Consultation***

***SPC Meeting, October 27, 2011***

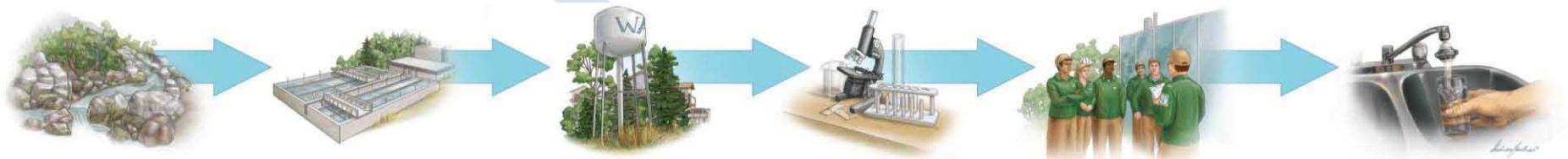


## ***Presentation Outline***

- Source Protection: *Principles, Process, Scope,*
- Brief review of the technical assessment,
- Draft Source Protection Plans,
- Next Steps

## *Source Protection: Principles*

- **Prevention:** safeguarding drinking water for the health of our communities
- **Multi-barrier:** source protection is the first barrier and focuses on quality and quantity
- **Watershed/Subwatershed:** basic unit for source protection planning
- **Shared responsibility:** locally driven, collaborative planning process in partnership with multiple stakeholders



## *Source Protection Committee*

- Chair plus 22 members:
- 7 Economic
- 7 Municipal
- 7 Public Sector
- 1 First Nations Member



## Source Protection Process

### Identify

#### Assessment Reports:

- Technical foundation for the Plan;
- Evaluates watershed vulnerability and threats to drinking water

**(2006-2011)**

### Plan

#### Source Protection Plans:

- Outlines the specific policies to ensure significant drinking water threats will not be a problem in the future
- Other policies/actions to ensure municipal water supply systems are protected.

**(2011-2012)**

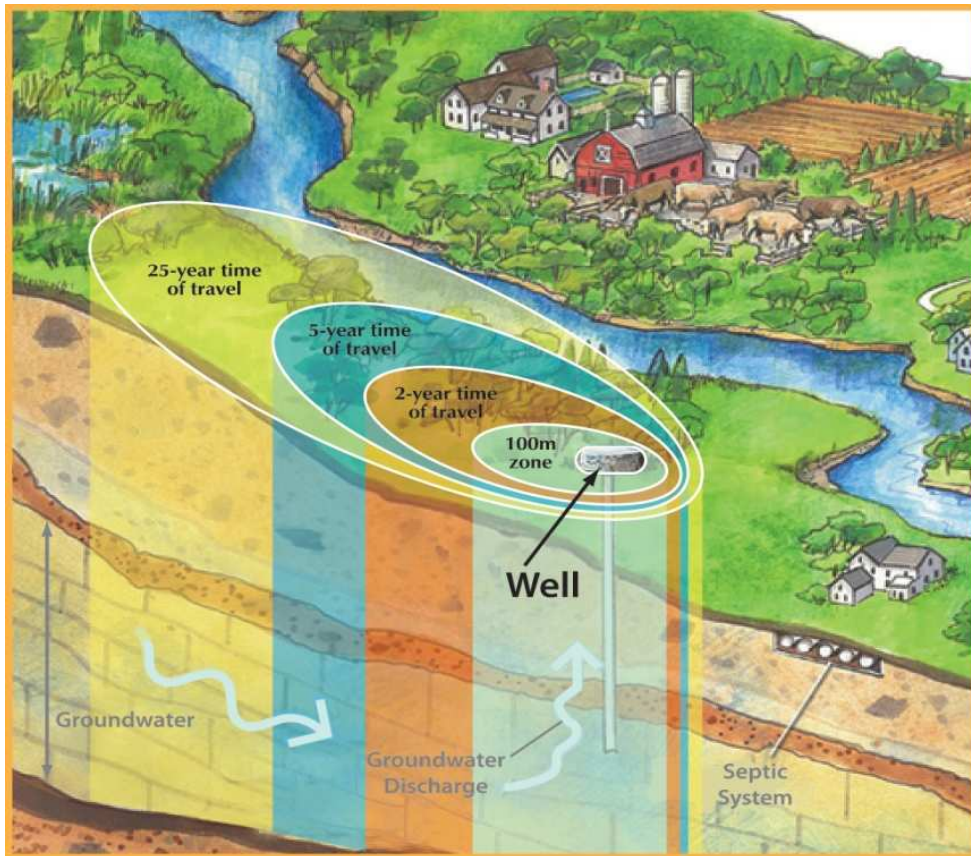
### Implement & Monitor

- Implement the source protection plan
- Inspect and Enforce
- Monitor and Report
- Review plan

**(2013 & beyond)**



**Vulnerable Areas**



## Prescribed Drinking Water Threats

**Waste Disposal**

**Sewage**

**Agriculture**

Application of **ASM**

Storage of **ASM**

Management of **ASM**

Application of **NASM**

Handling & Storage of **NASM**

**Fertilizer** Application

Handling & Storage of **Fertilizer**

**Pesticide** Application

Handling & Storage of **Pesticide**

**Livestock** confinement/ grazing

Application of **Road Salt**

Handling & Storage of **Road Salt**

Storage of **Snow**

**Industrial**

Handling & Storage of **Fuel**

Handling & Storage of **DNAPL**

Handling & Storage of **Organic Solvent**

**Aircraft De-icing** Chemicals

**Water Quantity**

Consumptive Water Taking

Activity that Reduces Aquifer Recharge

## Water Quality Risk Assessment



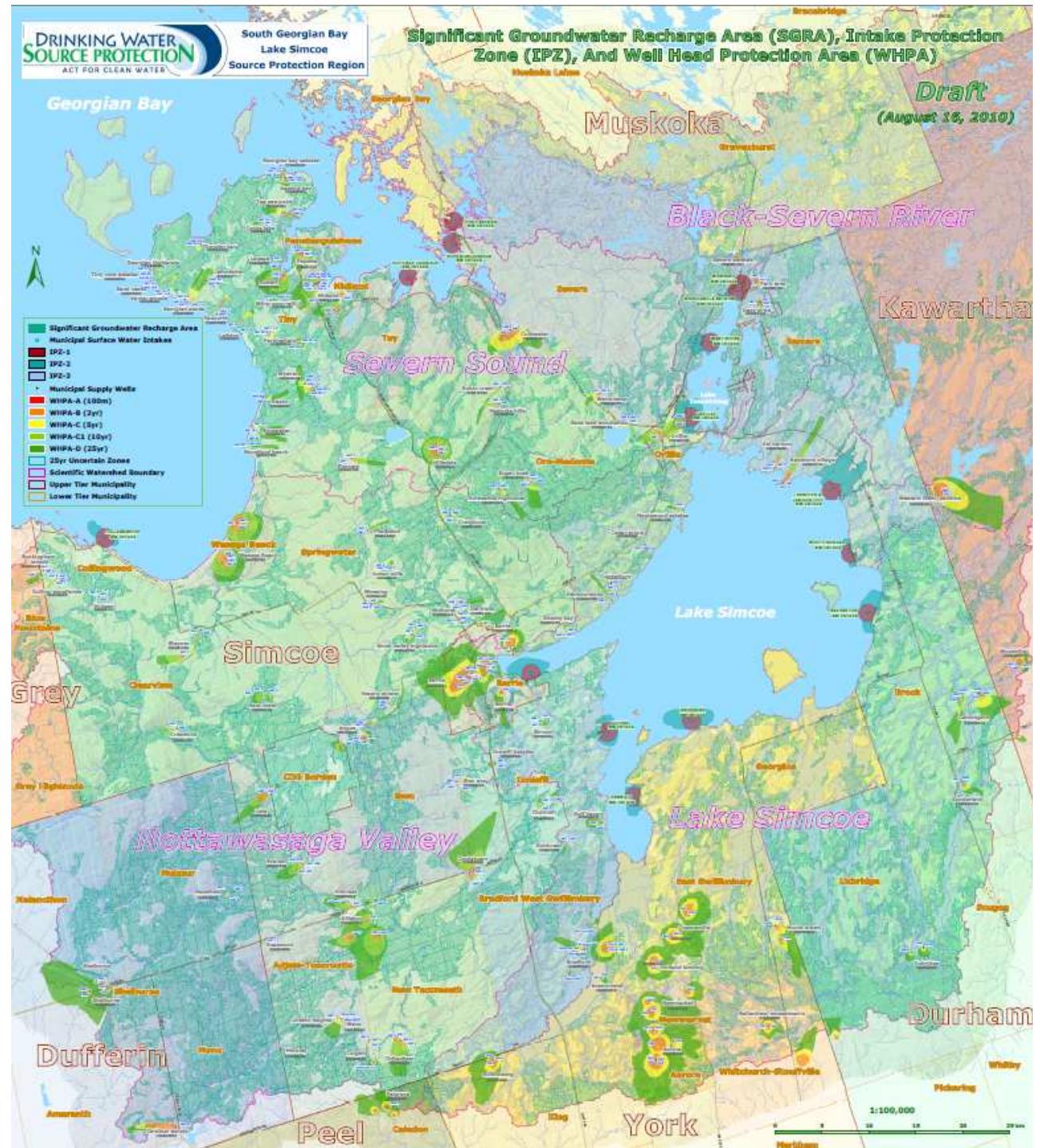
Significant threat  
in a vulnerable area  
= **High level of risk**



Significant threat  
in an area of low  
vulnerability  
= **Low level of risk**

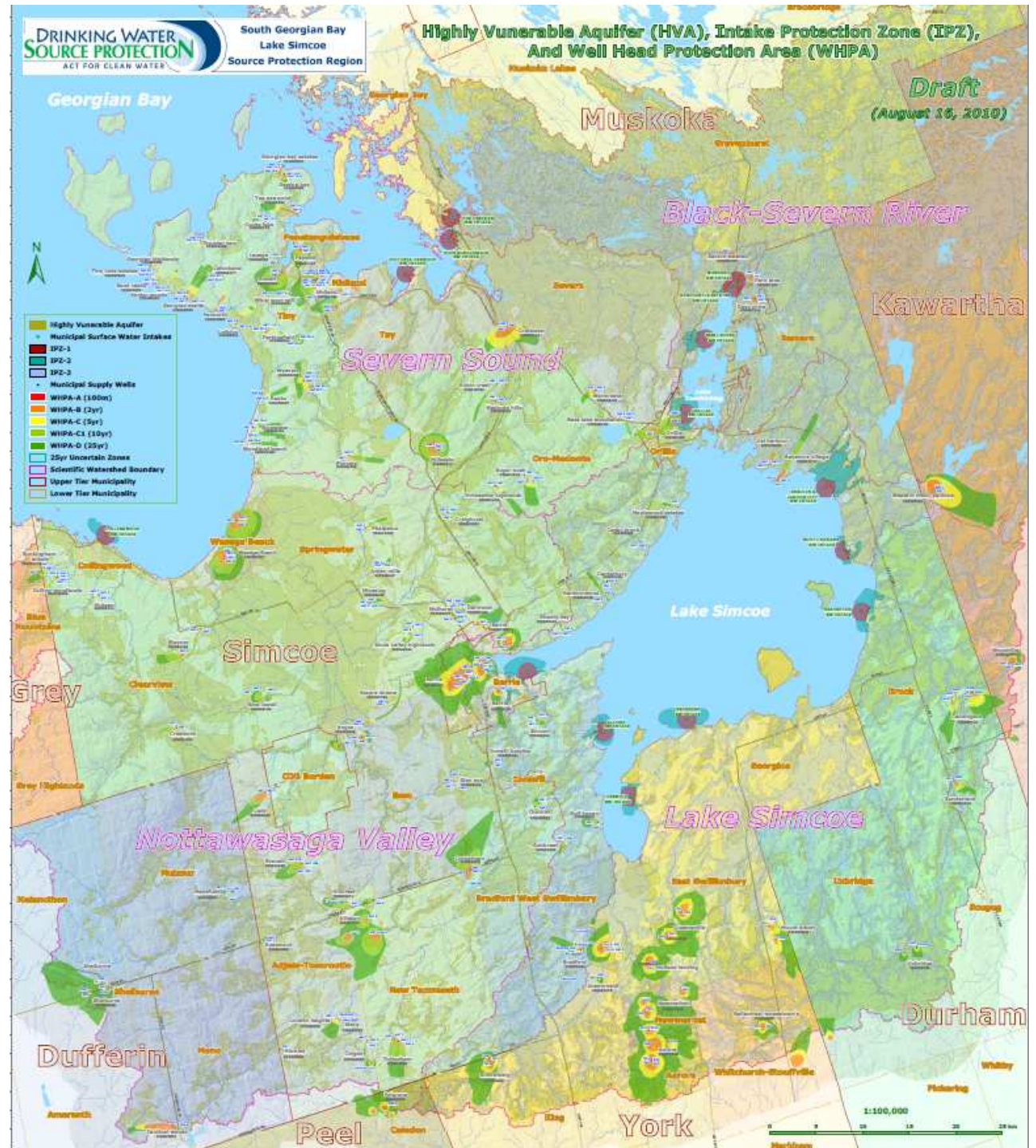
# 'Vulnerable Areas'

- Wellhead Protection Areas
- Intake Protection Zones
- Significant Recharge Areas
- Highly Vulnerable Aquifer Areas



# 'Vulnerable Areas'

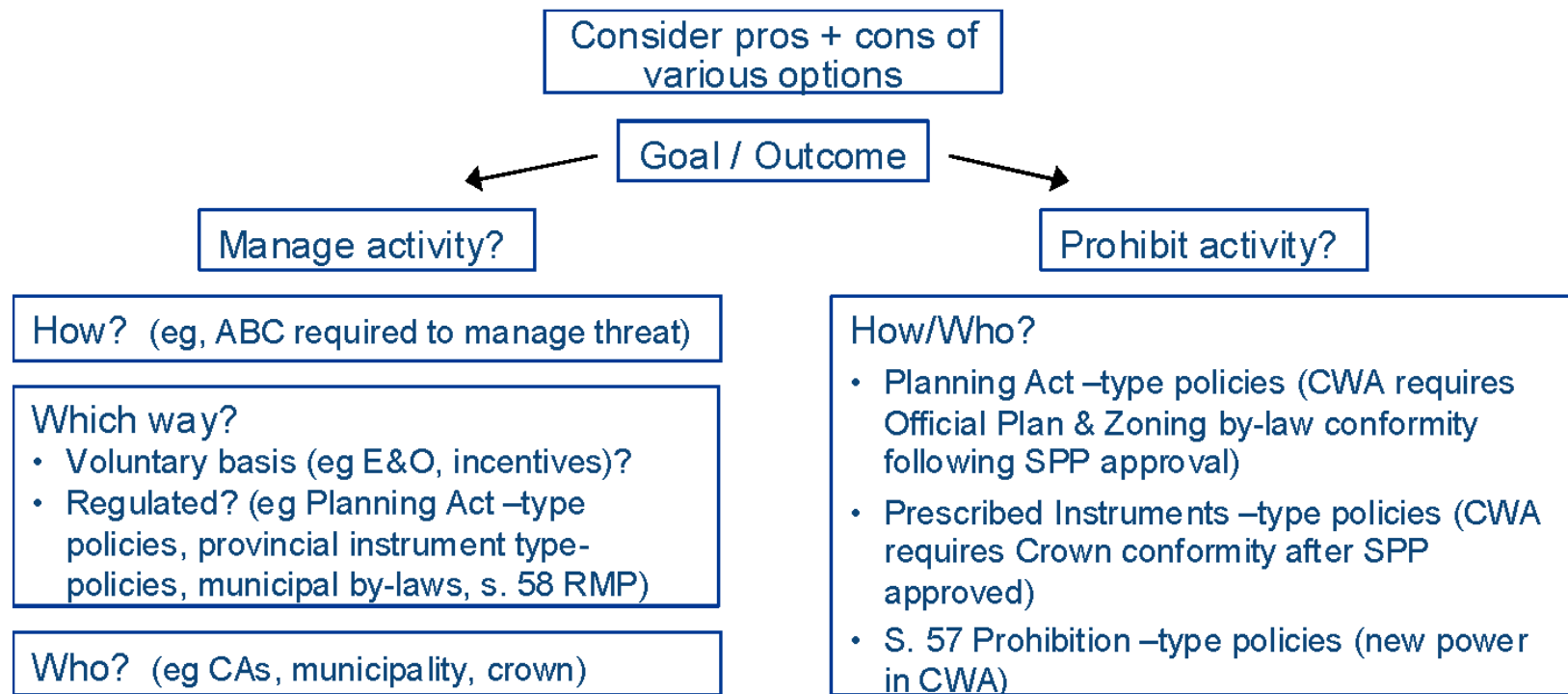
- Wellhead Protection Areas
- Intake Protection Zones
- Significant Recharge Areas
- Highly Vulnerable Aquifer Areas



## *Developing the Source Protection Plans*

- A source protection plan must contain a policy for every area where an activity **is or could be** a significant drinking water threat as identified in an assessment report
- The policy must meet the objectives in Section 22(2) and (6) of the *Clean Water Act* –a threat to drinking water ceases to be / does not become significant (i.e. adequately managed)
- This does not mean that the activities must stop!
  - *May mean some changes to how an activity is carried out*
  - *May mean that a regular inspection needs to take place*
  - *May mean no change (it may be determined that satisfactory risk management activities are already occurring)*

## Policy Approach



**GOAL: Threat ceases to be / does not become significant (i.e., sufficiently managed)**

## Common approaches in Draft policies

- Reliance on existing frameworks
    - Use / enhancement of existing tools preferred
  - Part IV powers being drawn upon
    - Prohibition of many future threat circumstances
    - Risk management to address existing activities
    - Restricted land use as a complementary tool to each
  - Suite of tools being suggested
    - CWA tools coupled with traditional planning, outreach and incentives
-

**Action to be Taken**

**Expected Outcome**

**Responsibility**



**Activity is or could be a significant threat**

<b>Prescribed Instrument</b>	<b>Minimize Threat</b>	<b>Province</b>
------------------------------	------------------------	-----------------

<b>Prohibition (s. 57)</b>	<b>Eliminate Threat</b>	<b>Municipality</b>
<b>Land Use Planning Approaches</b>	<b>Minimize Threat</b>	

<b>Risk Management Plans (s. 58) Interim Risk Management Plans (s. 56)</b>	<b>Reduce / Remove Threat</b>	<b>Municipality or Party Designated by Municipality</b>
--------------------------------------------------------------------------------	-------------------------------	---------------------------------------------------------

<b>'Softer Tools'</b> Education, Outreach, Incentives, Research, etc.	<b>Reduce Threat</b>	<b>Various SPA, Municipality, Province, OSCIA etc.</b>
--------------------------------------------------------------------------	----------------------	--------------------------------------------------------

**Areas Affected by Policy**

Existing Assessment Report  
Threats Map

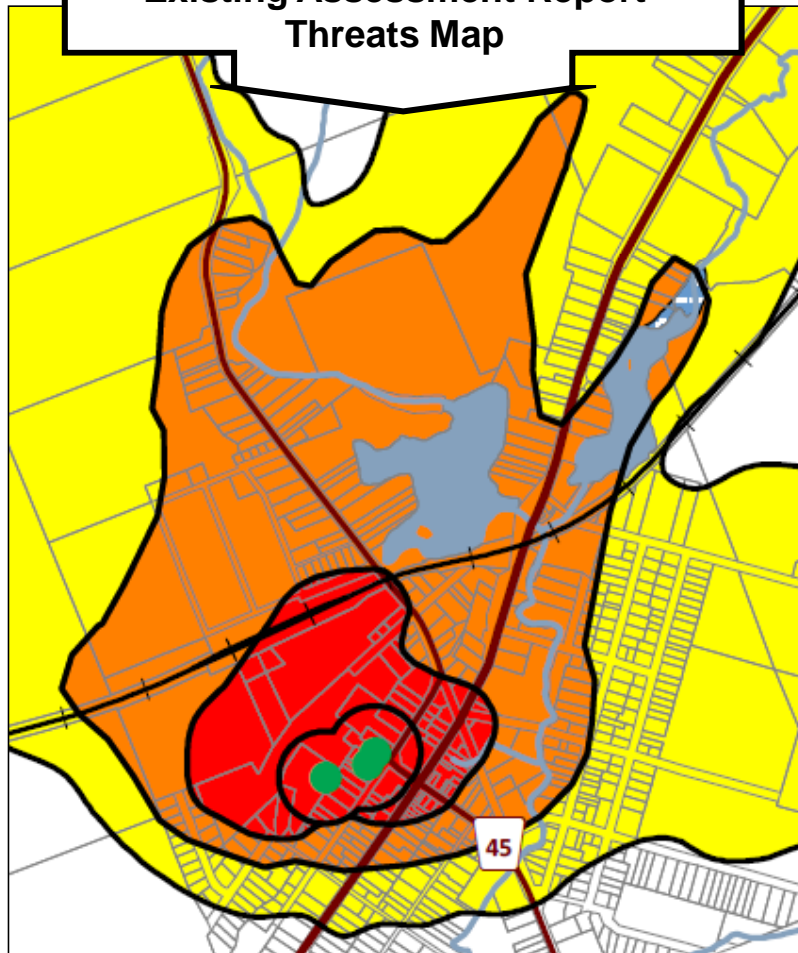


Table that lists activities that *can be* significant threats (*no reference to circumstances*)

	Vulnerable Zone				
Chemicals	WHPA -A	WHPA -B	WHPA -C	WHPA -D	WHPA -E
Vulnerability Score	10	10	10	10	10

	Vulnerable Zone			
Chemicals	IPZ-1	IPZ-2	IPZ-3	ICA
Vulnerability Score	10	10	10	any

# Source Water Protection Plan : Coles Notes

Table Summarizing Responsibilities in Source Protection Plan

Page # in Draft Source Protection Plan	Threat #	Threat	Part IV - RMP	Part IV - Prohibition	Part IV - Restricted Land Use	Land Use Planning	Prescribed Instrument	Education and Outreach	Incentives	Research	Other	Strategic Actions
			The municipality responsible for water supply and treatment			Municipalities with land use planning responsibility	Provincial Ministries	Municipalities responsible for water and SPAs (some exceptions)	Province and SPA (some exceptions)	Provincial Ministries	As noted below	All municipalities (some exceptions)
47	1a	The establishment, operation or maintenance of a waste disposal site - hauled sewage.					x - existing and future (MOE)			x - future (MOE)	x - existing (MOE)	x - MOE + municipalities
49	1b	The establishment, operation or maintenance of a waste disposal site - waste disposal sites.				x - future	x - existing and future (MOE)	x - existing	x - existing (municipality responsible for waste management)	x - existing (municipalities)		x - MOE
51	1c	The establishment, operation or maintenance of a waste disposal site - mine tailings.					x - existing and future (MOE)					
53	2a	The establishment, operation or maintenance of a system that collects, stores, transmits, treats or disposes of sewage - stormwater.				x - future	x - existing and future (MOE)	x - existing	x - existing	x - future (MOE)	x - future (MOE)	x - municipalities
57	2b	The establishment, operation or maintenance of a system that collects, stores, transmits, treats or disposes of sewage - sewage treatment facilities.				x - future	x - existing and future (MOE)	x - existing	x - existing			x - municipalities
61	2c	The establishment, operation or maintenance of a system that collects, stores, transmits, treats or disposes of sewage - septic.				x - future	x - existing and future (MOE)	x - existing	x - existing		x - municipalities	x - municipalities
65	2c (ICA)	Issue Contributing Area: Nitrate for Georgian Sands and Lafontaine (Threat #3c: on-site sewage systems).				x - future	x - (existing and future) MOE				x - existing and future (municipalities)	
66	2d	The establishment, operation or maintenance of a system that collects, stores, transmits, treats or disposes of sewage - industrial effluent.				x - future	x - existing and future (MOE)	x - existing	x - existing			
69	3	The application of agricultural source material to land.	x - existing	x - future	x - future				x - existing (*OSCIA)	x - existing		
72	3/4 (ICA)	Issue Contributing Area: Georgian Sands and Lafontaine (Threat #3 and 4)	x - existing	x - future	x - future	x - future						

## **Consultation and Pre-Consultation**

### *Providing Feedback on Draft Policies*

#### **Consider:**

- The protection of the community's drinking water sources
  - Workload and financial impacts; request that source protection authorities translate draft policies into a work plan
  - Keep in mind the ability to delegate and share responsibilities (pooling resources) when evaluating options
-

## **Key Messages – Municipal Implementation**

- Identify Risk Management Officials and internal processes
- Land use planning decisions must consider the protection of drinking water sources to be consistent with the PPS
- Decisions on planning matters must conform to significant threat policies (and have regard to moderate and low threat policies)
- Municipalities responsible for implementation of policies under other legislation: *CWA-Part IV, Municipal Act, etc.*
- Legal effect applies to all approval authorities, including the OMB

**Building a Business Case – Implementation Costs and Considerations**

- RMO / RMI
  - RMPs number required & cost associated with each
    - RMP timelines (shorter timelines will be more expensive)
    - How many applications to be reviewed per year?
    - Will Agricultural RMPs be comparable NMP/NMS? \$2,500 ea.
  - Support Costs i.e. travel, workspace, support
    - Comparable to building inspector or regulations officer?
  - Can RMOs / RMIs be shared between municipalities?
- Septic System Inspection, added work load for Health Unit?
- Salt Management & Emergency Management Plans
- Education and Outreach, large or small program?
- Use of Third Parties
  - Request cost estimates and incorporate into business case (TSSA, OSCIA).

## **Next Steps**

### **Notice of Plan preparation** (s. 19 of O. Reg. 287/07)

- Complete - Spring 2011

### **Pre-consultation** (s. 37, s. 38, s. 39)

- Draft policies distributed on October 7<sup>th</sup>, 2011
- Municipal and Provincial Consultation: Mid October 2011 – January 13, 2012

### **Draft plan** (s. 41)

- Spring 2012 (Open-houses)

### **Proposed Plan** (s. 42)

- Late Spring - Summer 2012, No changes are made
- Submitted with all comments and any municipal resolutions received (s. 25)

## **Submission to Minister, August 20, 2012**

---

**Key Contacts**

Lynn Dollin, Chair, SPC

Mike Walters, South Georgian Bay Lake Simcoe SPR

Ben Longstaff, South Georgian Bay Lake Simcoe SPR

Susan Jagminas, South Georgian Bay Lake Simcoe SPR

- **[www.ourwatershed.ca](http://www.ourwatershed.ca)**
- **[swp@lsrca.on.ca](mailto:swp@lsrca.on.ca)**
- **800 465 0437**

# Early Actions

